



# **CUSTOMS TRADE PARTNERSHIP AGAINST TERRORISM (CTPAT)**

Date April 20, 2021



U.S. Customs and  
Border Protection

## **Southwest Border Overview**



# U.S. Customs and Border Protection

## Our Mission

To safeguard America's borders thereby protecting the public from dangerous people and materials while enhancing the Nation's global economic competitiveness by enabling legitimate trade and travel.



Land

Air

Rail

SEA

# What is Unified Cargo Processing (UPC)?



Unified Cargo Processing is a joint program between the U.S. Customs and Border Protection and Mexico's Tax Administration Service. Under this program, CBO and SAT conduct joint cargo inspections.



Former CBP Commissioner Kevin. K. McAleenan and Chief of Mexico Tax Administration Service Osvaldo Santin signed agreements to ensure better cooperation on trade issues in Mexico City, August 23, 2017.



Non-Intrusive Image sharing was initiated in August of 2015 between US & Mexico Customs to facilitate the detection and interdiction of cross-border illicit activities.

## Unified Cargo Processing – CBP Enhanced Trade Benefits

- Enhanced national security by streamlining the supply chain
- Wait times are greatly reduced
- Trade compliance rate for UCP participants is approaching 99%

## Unified Cargo Processing – Importer Benefits



- Improves border, management, and coordination
- Facilitates cargo movements
- Intensive cargo receives front of the line privileges
- Intensive cargo undergoes a joint inspection and is only off loaded once
- Transit inventory costs are greatly reduced

## **Port of Laredo**

### **Three Major Operational Divisions**

- Passenger
- Tactical
- Trade Operations

### **Four International Bridges:**

- Gateway to the Americas International Bridge 1
  - Lincoln-Juarez International Bridge 2
  - Colombia Solidarity Bridge 3
  - World Trade Bridge 4
- 
- International Airport
  - KCS International Railroad Bridge



## Port of Laredo



- The Port of Laredo is the largest inland port in the Western Hemisphere in terms of monetary import value and volume.
  - Processed approximately 2.3 million commercial containers
  - Facilitated U.S./Mexico Trade surpassing \$303 Billion
  - Collected over \$1.6 Billion dollars in duties, taxes & processing fees.
  
- In FY18, the Port of Laredo was the busiest inland border crossing for commercial trucks and rail operations in the nation processing between the United States and Mexico.

## FAST Fiscal Year Comparison

### FAST Volume Comparison (Laden & Empties)

FAST Volume WTB FY 2016	472,411
FAST Volume WTB FY 2017	500,163
FAST Volume WTB FY 2018	551,953



# World Trade Bridge



# Columbia Solidarity Bridge



# International Airport CBP General Aviation Facility (GAF)



# KCS International Railroad Bridge



# Brownsville Texas Seaport



## Trade Operations

- 40% of entire U.S. Trade with Mexico is processed at Port of Laredo
  - WTB averages 7,000 inbound commercial conveyances a day
  - COL averages 1,400 inbound commercial conveyances a day
- Approximately 136,000 outbound commercial conveyances a week
- 59% of all rail crossing the Southern Border cross through Laredo





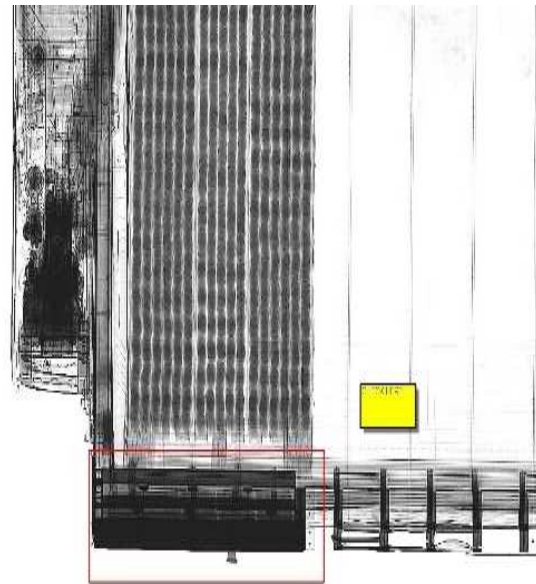
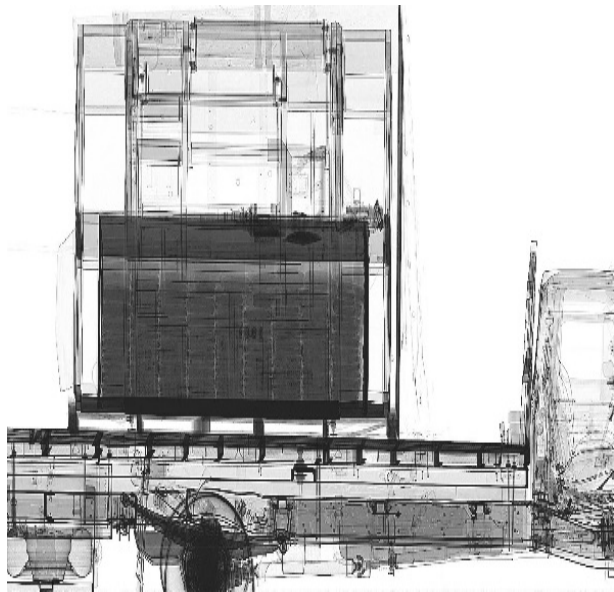
# Trade Operations



## Trade Operations



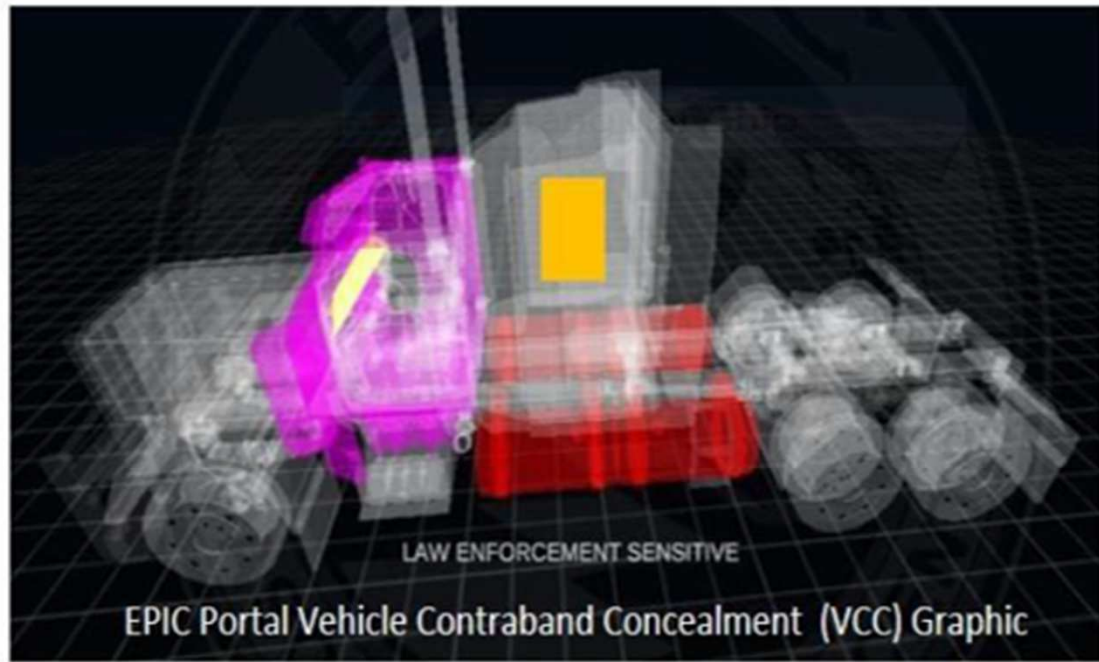
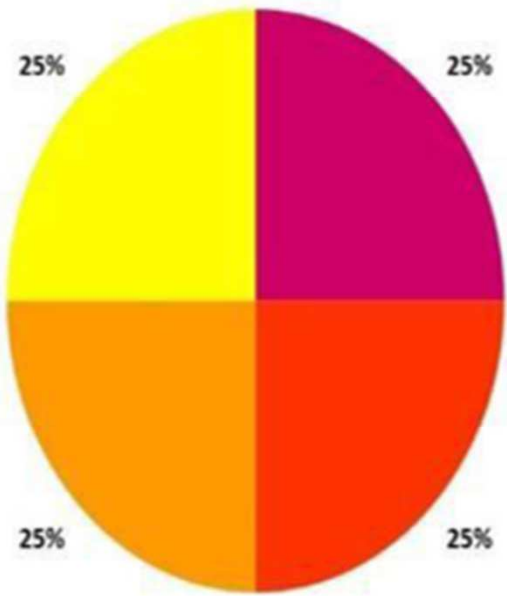
- Primary Inspection: E-Manifest, Driver, Merchandise, Conveyance, System Queries, etc.
- Secondary Inspections: Dock area, Tailgate, Offloads, K-9 Inspections, Non-Intrusive Inspections (NII), etc.
- CBP employs state of the art (NII) technology



# (U) Concealment Locations in Commercial Tractors

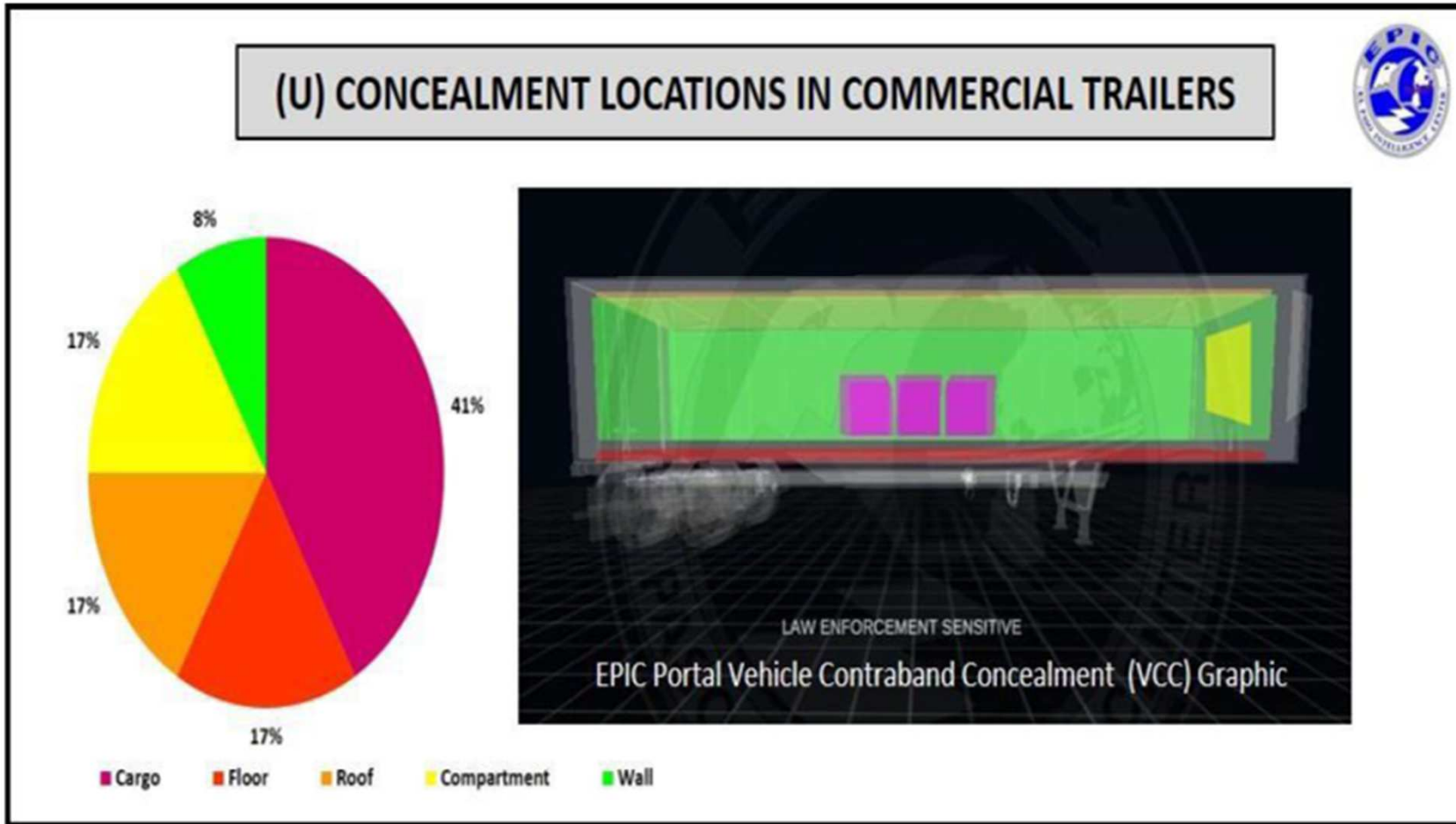


## (U) CONCEALMENT LOCATIONS IN COMMERCIAL TRACTORS



■ Cab   ■ Gas Tank   ■ Compartment   ■ Air Vent

# (U) Concealment Locations in Commercial Tractors



# Free And Secure Trade (FAST) Benefits

- Dedicated Lane on Bridge
- Dedicated Primary Lanes
- Fewer inspections
- Reduced wait time
- Front of the Line benefits at Non-Intrusive Inspections



## FAST Procedures at Port of Entry



- Eligibility for the FAST program requires participants (carriers, drivers, importers, and southern border manufacturers) to submit an application, agreement, and security profile depending on their role in the CTPAT program.
- While FAST shipments are considered low risk, they are still subject to increased screening and examination based upon targeting, selectivity, and inspector initiated enforcement actions corresponding with the threat.

## Processing of FAST Applicants



- The applicant's biographical information, digital photo, and digital fingerprints are captured in the Global Enrollment System (GES).
- Enrollment Officer runs system queries for any information that was not declared by the applicant during the application process.
- Once approved, the FAST card is issued in 14 days.
- The FAST card is valid for five years.
- FAST participants get vetted by the CBP Enforcement Vetting System every 24 hours.
- All denied applicants may reapply after 90 days.

## Processing of FAST Applicants

- Applicants must go to <https://ttp.dhs.gov/> and create an account.
- Fill out and submit online application along with a \$50 dollar application fee.
- If conditionally approved, applicant must schedule and attend an in-person appointment at an enrollment center.
- Applicant must provide all required documents (Passport, Visa, Birth Certificate, Photo ID, etc.) during the appointment.
- The applicant is given a copy of the FAST participant guide in the proper language. The driver's agreement will be read and signed by the applicant.



## FAST Procedures at Port of Entry



- The Free and Secure Trade (FAST) Program is an initiative between the United States, Mexico, and Canada designed to ensure security and safety while enhancing the economic prosperity of each country. The three countries have agreed to coordinate, to the maximum extent possible, their commercial processes for clearance of commercial shipments at the border.
- This promotes free and secure trade by using common risk-management principles, supply chain security, industry partnership, and advanced technology to improve the efficiency of screening and clearing commercial traffic at our shared borders.

## FAST Enrollment Center



FAST Enrollment Center, CBP officers:

- Primary FAST Dedicated Lanes
- Conduct interviews for FAST applicants
- Conduct checks on FAST shipments
- Verify CTPAT status on the supply chain for FAST shipments
- Provide FAST and CTPAT information to the Trade community
- Provide Informed Compliance to FAST violators
- Process Inadmissibility cases

## FAST Enrollment Center



Currently:

- FAST shipments account for 27% of arriving commercial truck traffic
- World Trade Bridge averages 2000 conveyances per day through the dedicated FAST Lanes
- Colombia Solidarity Bridge averages 175 conveyances per day through the dedicated FAST Lanes
- Over 4,861 FAST participants
- Approximately 1931 CTPAT carriers
- 1,680 plus C-TPAT manufacturers in Mexico

# FAST Referrals



## FAST PARTICIPANT ACTION SHEET

Date: \_\_\_\_\_ Time: \_\_\_\_\_ Officer: \_\_\_\_\_

Driver's Name: \_\_\_\_\_ D.O.B.: \_\_\_\_\_

FAST ID #: \_\_\_\_\_ Entry Document #: \_\_\_\_\_

Trip #: \_\_\_\_\_ Carrier: \_\_\_\_\_

### Reason:

- In Bond Shipment \_\_\_\_\_
- Manifest Discrepancy \_\_\_\_\_
- Non FAST Shipment \_\_\_\_\_
- High Security Seal Was Not Used \_\_\_\_\_
- Document Deficiency (Non-Activated, Expired, Missing) \_\_\_\_\_
- Use of FAST Lane to Avoid Traffic in Regular Lanes \_\_\_\_\_

### Please Indicate Action (s) Taken:

- FAST Participant was advised of violation \_\_\_\_\_
- FAST Card was lifted with FAST Enrollment Center Supervisor Approval \_\_\_\_\_
- FAST Driver was directed to report to the FAST Enrollment Center on \_\_\_\_\_ at \_\_\_\_\_ hours.
- FAST Driver was advised that failure to report to the FAST Enrollment Center may result in revocation of FAST Card \_\_\_\_\_

\_\_\_\_\_  
FAST Participant's Signature  
Acknowledgment of Action Taken

\_\_\_\_\_  
FAST Enrollment Center Supervisor



## ACCION EN PROGRAMA FAST

Fecha de Incidente: \_\_\_\_\_

Debe Presentarse en la Oficina de FAST (World Trade Bridge):

Fecha: \_\_\_\_\_

Hora: \_\_\_\_\_

**Notificacion:** En caso de no poder asistir a la oficina de FAST en la fecha y hora indicada el operador debera contactar la oficina de FAST al numero 956-794-9323 o 956-794-9416 para cambiar la cita. Si no asiste a la cita y no contacta la oficina de FAST previamente, su tarjeta y participacion en el programa de FAST seran sujetos a revocacion.

# FAST Informed Compliance



## INFORMED COMPLIANCE MEETING

Date: \_\_\_\_\_ Time: \_\_\_\_\_

CBP Representatives: \_\_\_\_\_

Company: \_\_\_\_\_

Company Representative (s): \_\_\_\_\_

### Reason For Meeting:

Failed to Follow FAST Rules / Requirements: \_\_\_\_\_

Non FAST Shipments: \_\_\_\_\_

Cabotage: \_\_\_\_\_

Other: \_\_\_\_\_

### Plan of Corrective Action:

\_\_\_\_\_  
\_\_\_\_\_  
\_\_\_\_\_  
\_\_\_\_\_

\_\_\_\_\_  
**FAST Participant's Signature / Acknowledgment of Plan of Corrective Action**

**Company Representative**  
\_\_\_\_\_  
**Acknowledgment of Plan of Corrective Action**

\_\_\_\_\_  
**FAST Enrollment Center Supervisor**

# Informed Compliance



PO Box 3130  
Laredo, TX 78044-3130



**U.S. Customs and  
Border Protection**

Dear Sir or Madam:

This is to acknowledge receipt of notification regarding a violation of U.S. Customs and Border Protection regulations regarding the utilization of the FAST lanes at the World Trade Bridge Port of Entry in Laredo, TX. Please note that violations may result in compliance counseling with local CBP management, notification to the corresponding C-TPAT Supply Chain Security Specialist, or further action if necessary.

Date of Incident: \_\_\_\_\_ ACE Trip Number: \_\_\_\_\_

Notification Issued to: \_\_\_\_\_ **Morenos Transfers**

Reason(s)

- The party or parties identified below are not C-TPAT members, and the shipment is ineligible for FAST lane privileges. It is your responsibility to confirm FAST lane eligibility for all shipments prior to arrival at the World Trade Bridge Port of Entry.
- In-bond shipments are ineligible for FAST lane privileges.
- An ineligible shipment was intentionally misclassified as a FAST shipment on the e-manifest. Attempts by members of the supply chain to falsely identify shipments as FAST eligible are not acceptable, and such actions will be reported directly to the offending party's C-TPAT Supply Chain Security Specialist. Furthermore, commercial drivers who engages in such activity are subject to FAST card revocation, and the cancellation of their non-immigrant visa.
- Other: \_\_\_\_\_

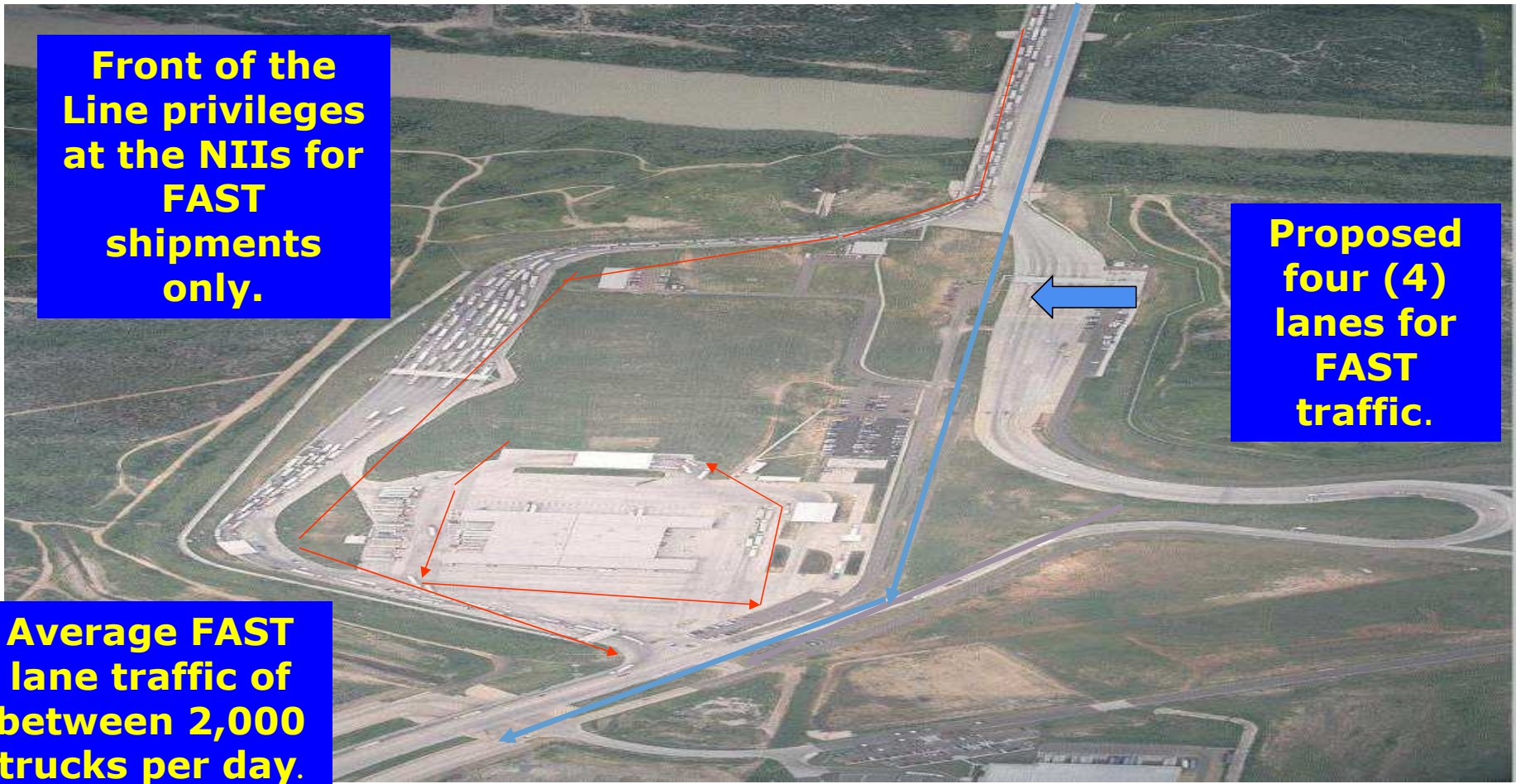
If you have any questions regarding this correspondence please contact the World Trade Bridge FAST Enrollment Center at (956) 794-9323/9324/9326.

Sincerely,

Mayra Ramos  
Supervisory CBPO

September 24, 201

# World Trade Bridge Cargo Processing Facility



**Front of the  
Line privileges  
at the NIIs for  
FAST  
shipments  
only.**

**Proposed  
four (4)  
lanes for  
FAST  
traffic.**

**Average FAST  
lane traffic of  
between 2,000  
trucks per day.**



# CTPAT Q&A

---

**Ricardo Villarreal**

Supply Chain Security Specialist

[Ricardo.d.villarreal@cbp.dhs.gov](mailto:Ricardo.d.villarreal@cbp.dhs.gov)

CTPAT

Office of Field Operations

U.S. Customs and Border Protection

